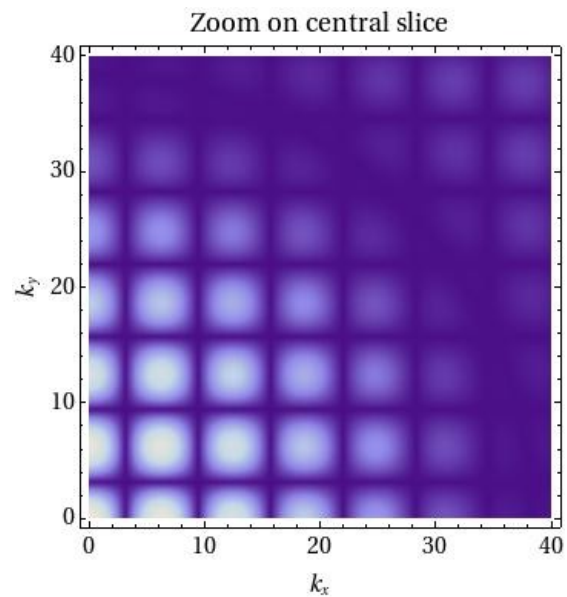
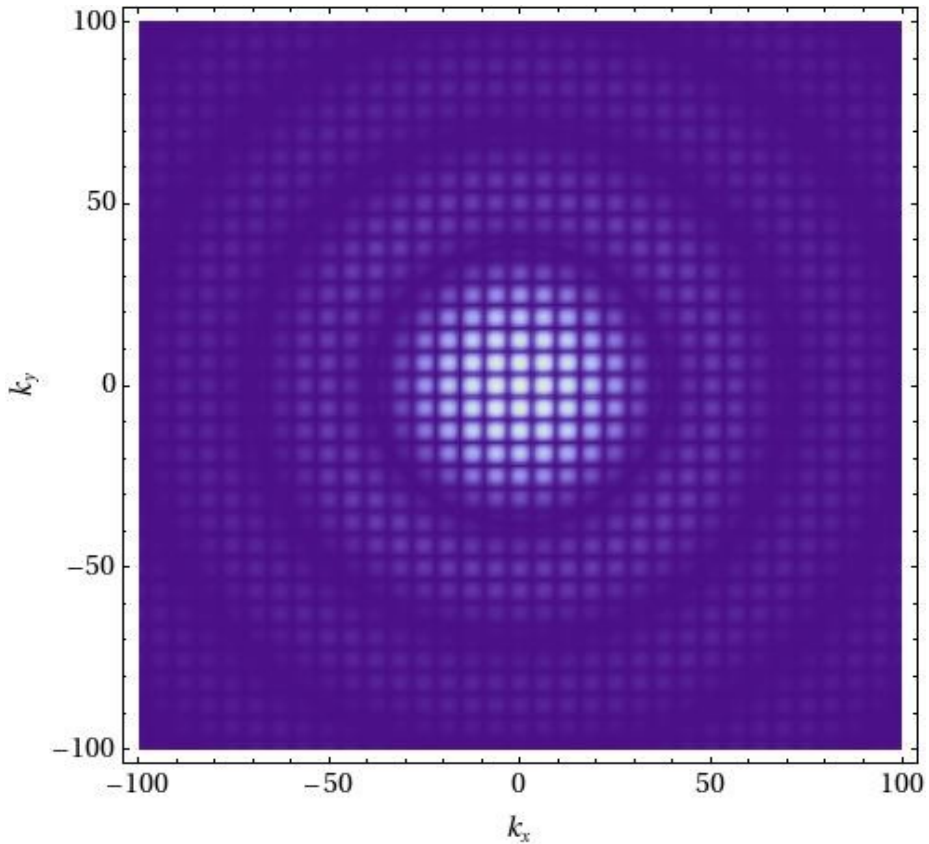


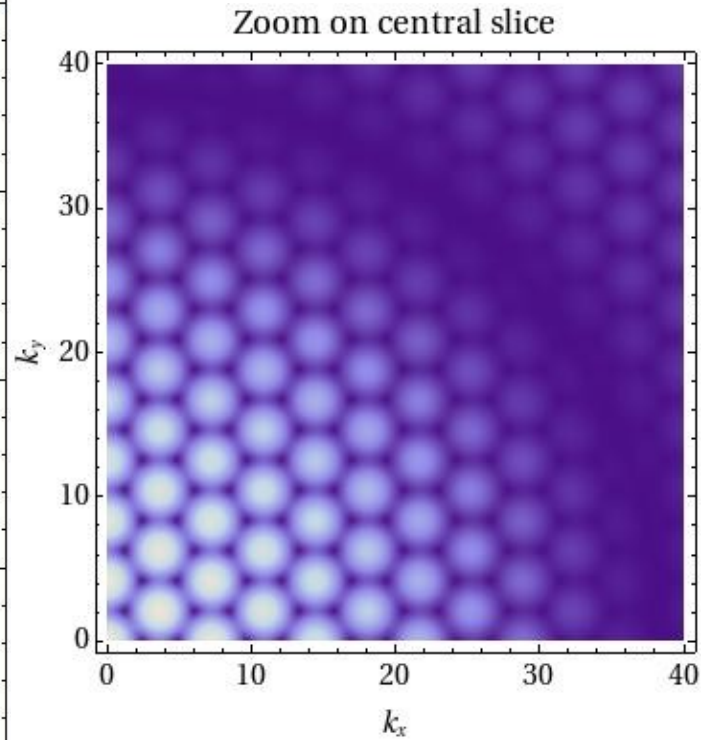
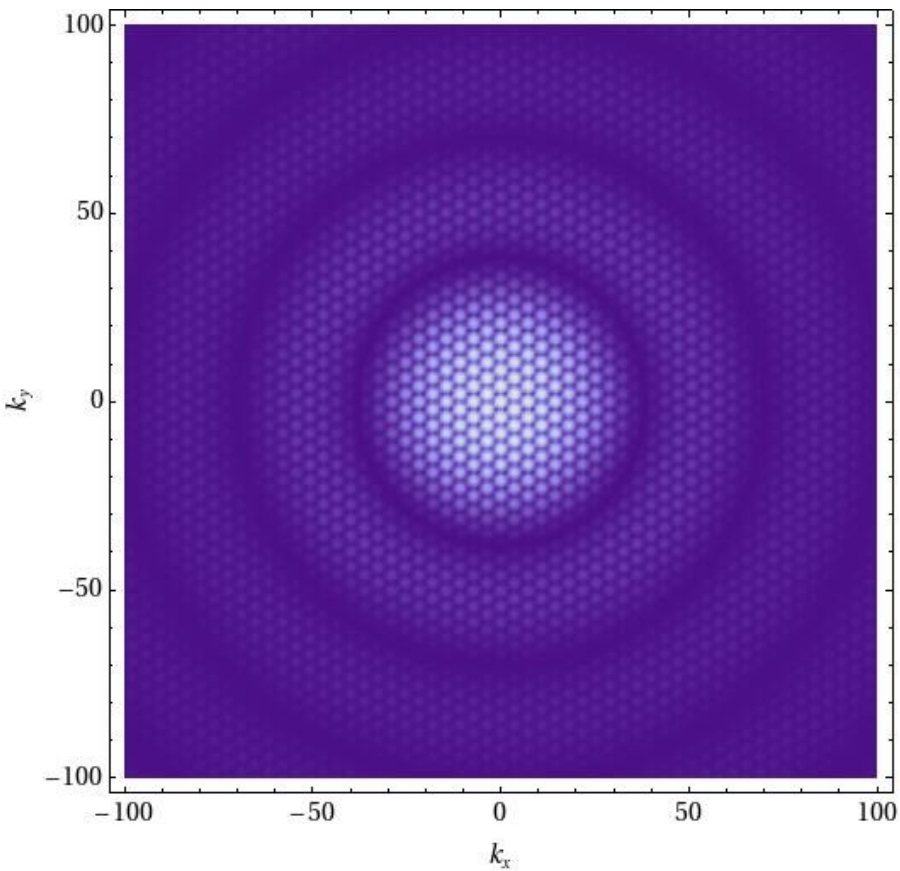
Physics League Challenge 1

Could you reconstruct the 2d configuration that gave rise to the following diffraction patterns? Estimate the size of the disks and their relative distances.

A.



B.



Hint:

I know this problem is nontrivial if you don't have a good idea how to guess. These patterns are the result of placing a small number of identical disks near each other. To help you through the process, here are diffraction patterns of one disk and two disks:

